

SANY[®]

SPECIFICATION

BETTER WORLD, BETTER SANY CRANE



STC2200T7

SANY TRUCK CRANE

 220 t

 75.5 m

 88.5 m

www.sanyglobal.com

QUALITY CHANGES THE WORLD

The parameters, pictures and standard/optional equipment are only for reference in this brochure, the actual machine is based on the effective price list and contract.

V1.0

QUALITY CHANGES THE WORLD

It is one of the core business units in SANY Group, specializing in the development and manufacturing of high-end wheel cranes, crawler cranes and tower cranes.

三一集团旗下核心事业部，从事高端轮式起重机、履带起重机、塔式起重机系列产品的研发制造。

BETTER WORLD, BETTER SANY CRANE

SANY CRANE

QUALITY CHANGES THE WORLD



▶ CONTENTS

目录

Highlights

整机亮点 ▶ 04

Overall Dimensions

整机尺寸 ▶ 08

Technical Specification

整机参数 ▶ 09

Travel Flexibility

通过能力 ▶ 11

Transport Solution

运输方案 ▶ 11

Counterweight Combinations

配重组合图 ▶ 12

Transport Dimensions

运输尺寸 ▶ 13

Jib Combinations

副臂组合 ▶ 14

Crane Introduction

整机介绍 ▶ 15

Working Conditions

工况组合 ▶ 17



Super Load Capacity

优越起重性能

Features a 75.5m 7-section boom and a 19.1m jib, optional two 8m boom extension.

75.5m七节主臂+19.1m副臂，可选配两节8m延伸臂。

Powerful Performance

动力强劲

Equipped with dual engines system, DF Cummins QSZ14-C460 for chassis, DF Cummins QSB6.7-C260 for superstructure. Operational fuel consumption reduced by 30% compared to single-engine system.

双发动力，下车东康QSZ14-C460，上车东康QSB6.7-C260，作业油耗相比单发动机 \downarrow 30%。

Strong Bearing Chassis

高性能底盘

Features a 1st, 2nd, 4th, and 5th axle drive system with all-wheel steering modes, including crab steering, independent rear axle steering, and rear axle locked steering, delivering powerful performance and exceptional maneuverability.

The FAST 12-speed automatic transmission with a hydraulic retarder ensures both low-speed climbing on rugged terrains and high-speed travel on roads. It also guarantees braking safety during long downhill stretches, providing reliable driving safety.

1、2、4、5四桥驱动，全轮转向（带蟹行、独立后桥转向、后桥锁定转向等多模式），动力强劲，转场灵活。

FAST-12档自动挡变速箱带液力缓速器，满足低速场地爬坡行驶又可满足高速行驶，保证在长下坡时的制动安全，行车安全可靠。

STC2200T7

SANY TRUCK CRANE

Wireless Remote Control System

无线遥控系统

Equipped with a wireless intelligent remote control system that allows full operation of outriggers, crane operations (boom telescoping, luffing up and down, slewing, winch hoisting and lowering), and counterweight lifting via remote control.

配置整车无线智能遥控器，实现支腿、作业(伸缩、起落幅、回转、卷扬收放)、配重提升等全遥控。



Wireless Remote Control System
无线遥控系统

Low Operating Costs

低运营成本

Capable of traveling on site with 20t counterweight, reducing the need for an additional counterweight transport trailer during transitions, significantly saving costs.

可携带20t配重转场，转场节约一辆配重运输车。



New Generation Cab Capacious, Convenient and Comfortable

搭载全新两室 操作便捷、宽敞舒适



Car Electronic Engineering, L2 drive assistance.
Full LCD instrument, equipped with anti-glare adjustment, able to weaken blue light effect.
Center control 12.1" multimedia entertainment screen, which can be connected with smart phone.
The seat with air suspension, automatic AC.

汽车级EE架构, L2级辅助驾驶。
全液晶仪表, 夜光不同场景设计, 防眩目调校, 弱化蓝光伤害。
中控12.1寸多媒体娱乐屏, 手机互联。
气浮座椅, 空调自动控制。

iCab

i-Cab - Driver's cab

新两室- 下车

Multi-function seat with air suspension, making driving more comfortable.

Double seats and foldable berth for the co-driver.

12.1-inch liquid crystal screen integrated with back-up image and multi-media.

Electric rearview mirror with electric heating, ensuring good field of view in foul weather.

Adjustable high-brightness LED headlamps/fog lamps, providing clear vision at night.

Reversing sensor with accurate distance detection capability, fully covering the parking area without blind spots, and effectively avoiding scratch and collision.

Full-automatic HVAC, able to automatically adjust indoor temperature as demanded.

主驾驶位配备气浮多功能座椅, 驾驶更舒适。

副驾驶位设置双座椅可折叠式卧铺。

12.1寸液晶触摸大显示屏, 集成倒车影像、影音娱乐功能。

电动、电加热后视镜, 不惧怕恶劣冰雪天气。

高亮度可调节 LED 大灯 / 雾灯, 提供夜间清晰视野。

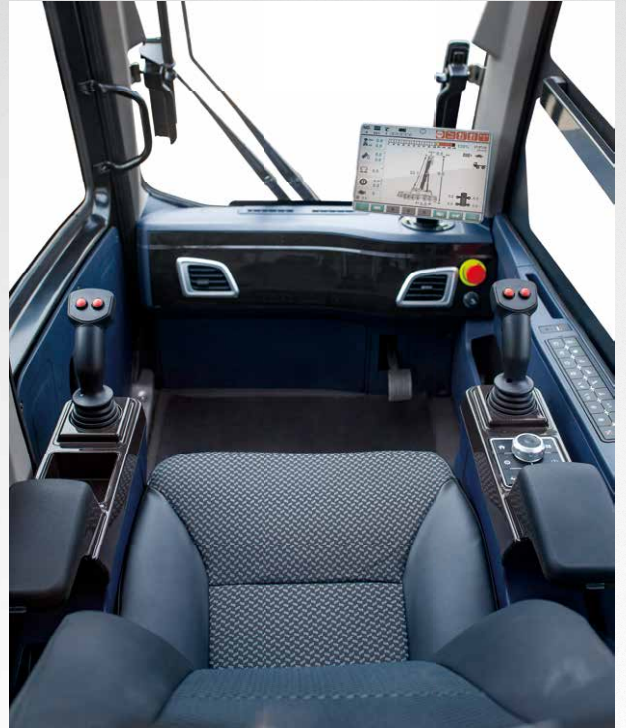
倒车雷达, 探头后方无死角, 精准探距, 防碰防撞。

全自动冷暖空调, 自动根据需求调整室内温度。



STC2200T7

SANY TRUCK CRANE



iCab

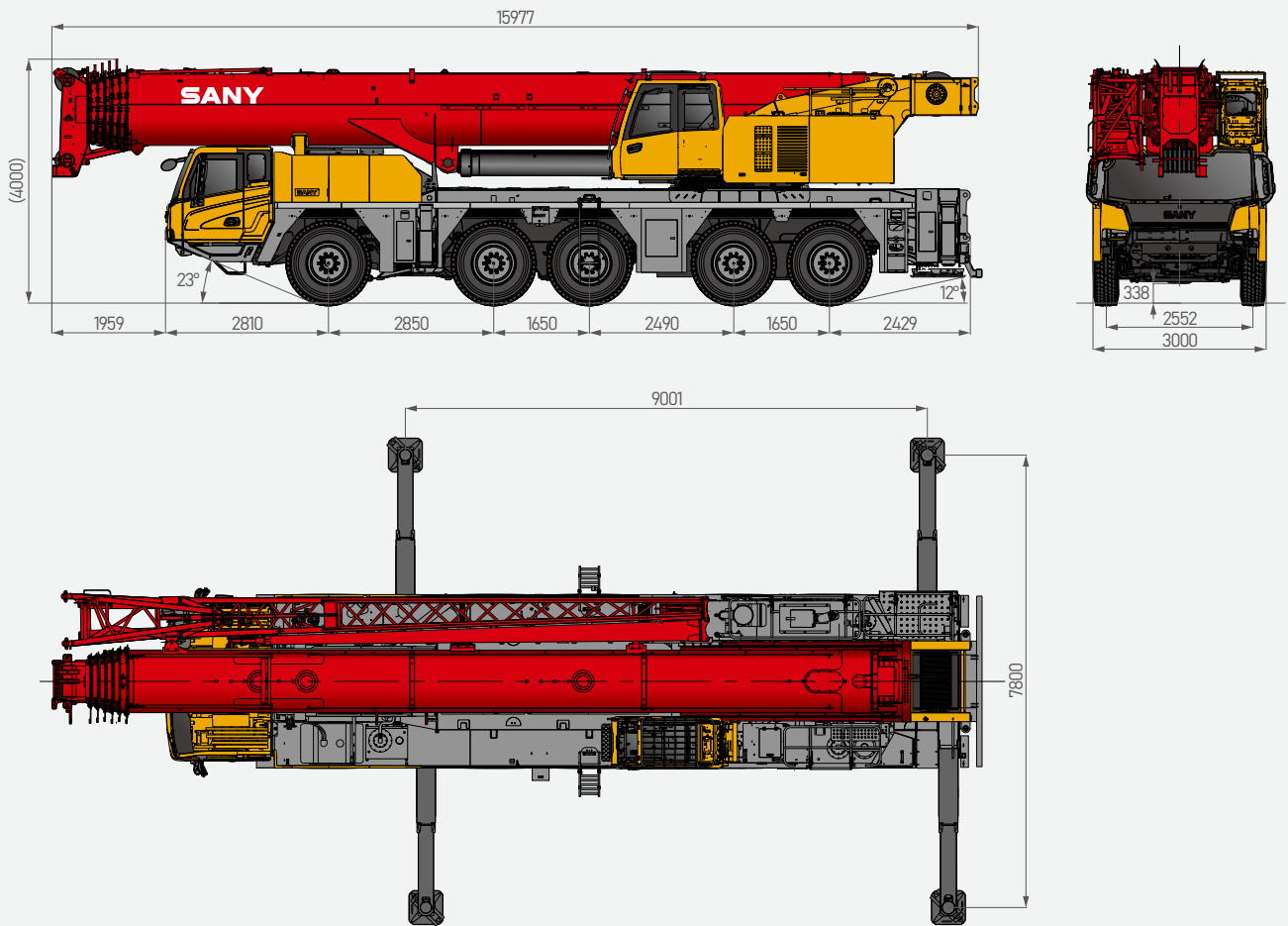
i-Cab - Operator's cab 新两室 - 上车

Seat widened by 450mm, and leg room increased by 30%. Optional cab tiltable by 0-20°, relieving cervical fatigue during large-angle and long-boom operations. Adjustable seat with maximum inclination of 140°, allowing the operator to lie flat and rest after work. Electric seat linked with armrest box, enabling multi-dimensional adjustment for enhanced comfort. 45° tilted silicone button panel, easy to reach and operate. Full-automatic HVAC, able to automatically adjust indoor temperature as demanded.

座椅、腿部活动空间较上一代增加 30%。
操纵室可实现 0-20° 上仰变位，大角度、长臂段作业可减缓颈椎疲劳。
可调式座椅，最大后仰 140°，操作手可以平躺休息。
电动座椅 + 扶手箱联动，多维度调节，更加舒适。
45° 斜置硅胶按键面板，触手可及，方便操控。
全自动冷暖空调，自动根据需求调整室内温度。

Overall Dimensions

整机尺寸



Technical Specification

整机参数

CATEGORY类型	ITEM项目	UNIT单位	VALUE参数	
CAPACITY 额定起重量	Max. lifting capacity 最大起重量	t	220	
WEIGHT 重量参数	Gross weight 整机总质量	t	60	
POWER (CHASSIS) 发动机参数(下车)	Engine model 发动机型号(排放标准)	-	QSZ14-C460-30 (EU Stage III)	
	Rated engine power 发动机额定功率	kW/rpm	338/2100	
	Max. engine torque 发动机最大输出扭矩	N·m/rpm	2215/1500	
POWER (SUPERSTRUCTURE) 发动机参数(上车)	Engine model 发动机型号(排放标准)	-	QSB6.7-C260 (EU Stage3A)	
	Rated engine power 发动机额定功率	kW/rpm	194/2200	
	Max. engine torque 发动机最大输出扭矩	N·m/rpm	990/1500	
DIMENSIONS 尺寸参数	Overall length 整机全长	mm	15977	
	Overall width 整机全宽	mm	3000	
	Overall height 整机全高	mm	4000	
TRAVEL 行驶参数	Max. travel speed 最高行驶速度	km/h	85	
	Steering radius 转弯半径	Min.steering radius 最小转弯半径	m	10
		Min.steering radius of boom tip 臂头最小转弯半径	m	13000
	Wheel formula 车轮模式	-	10×8×10	
	Min.ground clearance 最小离地间隙	mm	330	
	Approach angle 接近角	°	21	
	Departure angle 离去角	°	13	
	Max. gradeability 最大爬坡度	-	60%	
Fuel consumption per 100km 每100公里油耗	L	80		
MAIN PERFORMANCE 主要性能参数	Working temperature range 使用温度区间	°C	-25~+45	
	Min.rated lifting radius 最小额定幅度	m	3	
	Tail slewing radius 转台尾部回转半径	mm	4146	
	Boom sections (Qty.) 臂节数	-	7	
	Boom shape 臂形状	-	Oval shape 卵圆型	
	Max.lifting moment 最大起重力矩	Basic boom 基本臂	kN·m	6468
		Full-extension boom 全伸主臂	kN·m	3065
		Longest boom + jib 最长主臂+副臂	kN·m	1325
		Longest boom + extension + jib 最长主臂+延伸臂+副臂	kN·m	1228
	Boom length 臂长	Basic boom 基本臂	m	14.1
		Longest boom 最长主臂	m	75.5
		Longest boom + jib 最长主臂+副臂	m	89.7
		Longest boom + extension + jib 最长主臂+延伸臂+副臂	m	105.7
	Max.lifting height 最大起重高度	Basic boom 基本臂	m	15
		Longest boom 最长主臂	m	75.5
		Longest boom + jib 全伸主臂+副臂	m	88.5
	Longest boom + extension + jib 最长主臂+延伸臂+副臂	m	104.5	
Outrigger span (Longitudinal×Transverse) 支腿跨距(纵×横)	m	9×7.8 (6.5)		
Jib offset 副臂安装角度	°	0, 20, 40		
AIRCONDITIONER 空调	In operator's cab 上车空调	-	Heating & cooling 制冷、制热	
	In driver's cab 下车空调	-	Heating & cooling 制冷、制热	

Technical Specification

整机参数



Axle Load 轴荷

Axle 轴	1	2	3	4	5	Gross weight 总重量	Max. travel speed 最大行驶速度
Axle load 轴荷 /t	12	12	12	12	12	60	85km/h

Remark: Excluding main hook, outrigger floats.

备注: 不带副臂、副臂托架、备胎支架、备胎、主副钩、副卷扬、支腿盘、配重。



Hook 吊钩

Rated load 额载 /t		Number of sheaves 滑轮数量	Rope rate 倍率	Hook weight/kg 吊钩重量
9	●	0	1	310
75 (Double eye 双钩)	●	5	10	740
100 (Double eye 双钩)	○	7	14	1030
160 (Double eye 双钩)	○	9	18	1210

● Standard 标配 ○ Optional 选配



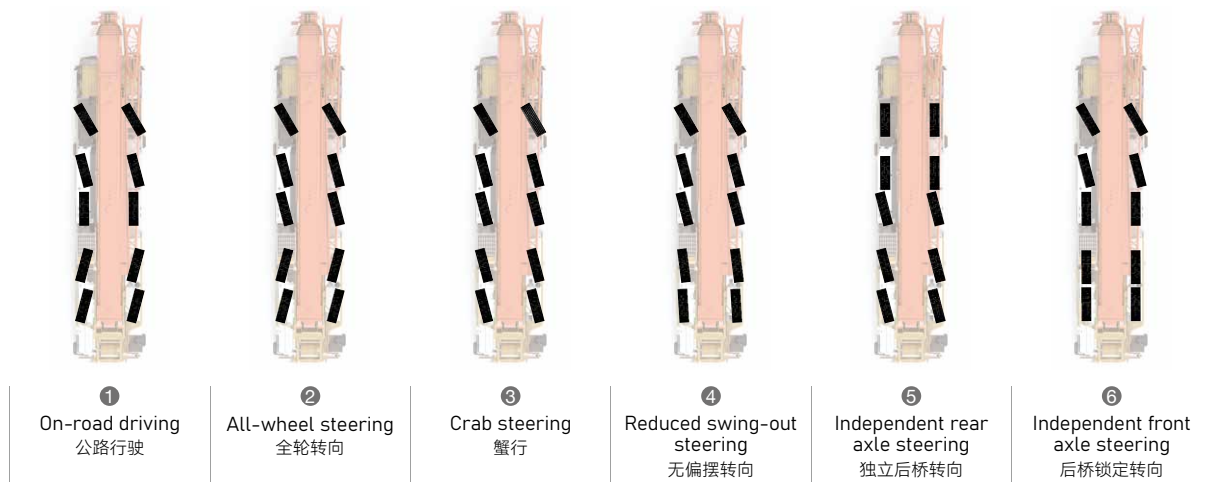
Operations 主要动作参数

Item 项目	Max.single rope lifting speed (empty load) 单绳速度 (空载)	Rope diameter/length 钢丝绳直径 / 长度	Max. single line pull 最大单绳拉力
Main winch 主卷扬	135m/min	Φ 20mm/410m	9t
Auxiliary winch 副卷扬	135m/min	Φ 20mm/250m	9t
Slewing speed 回转速度	1.5r/min		
Full luffing up/down time of boom 主臂起落幅时间	70s/100s		
Full extension/retraction time of boom 主臂伸缩时间	630s/650s		
Outrigger jack 垂直支腿	Extension 伸	50s	
	Retraction 缩	60s	
Outrigger beam 水平支腿	Extension 伸	30s	
	Retraction 缩	20s	

Travel Flexibility

通过能力

Six steering modes 6种转向模式

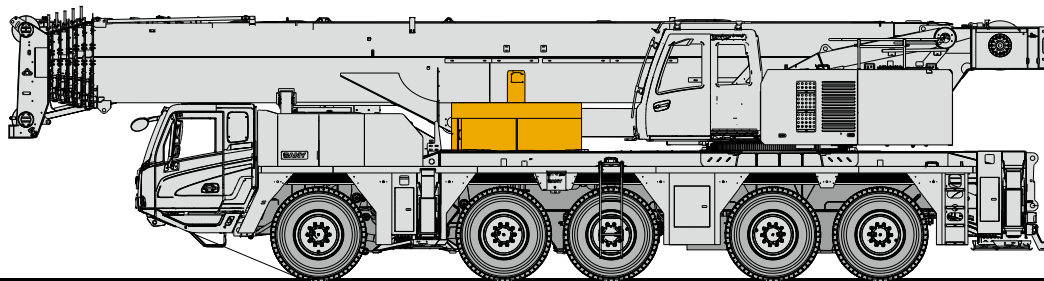


When the crane speed exceeds 30 km/h, the electro-hydraulic assisted steering axle locks centrally, preventing safety risks caused by overly sensitive steering, driver fatigue, and auxiliary steering system failures during high-speed driving.

车速大于30km/h时，电液辅助转向桥对中锁定，避免高速行驶时由于转向过于灵敏、操控疲劳以及因辅助转向系统故障而引发的安全风险。

Transport Solution

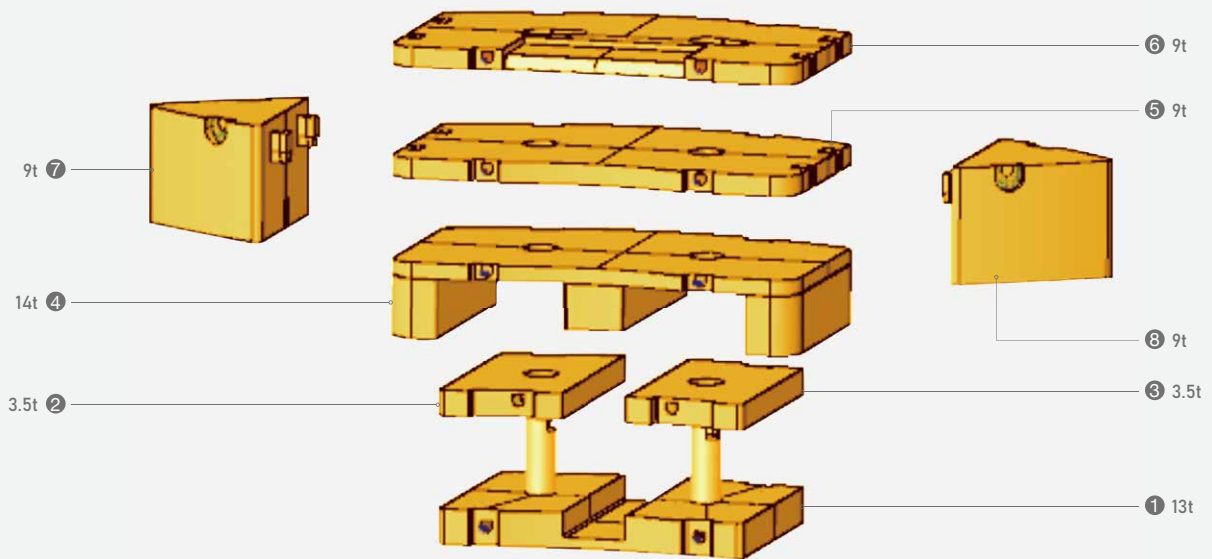
运输方案



≡ 20t (13t+3.5t+3.5t)

Counterweight Combinations

配重组合



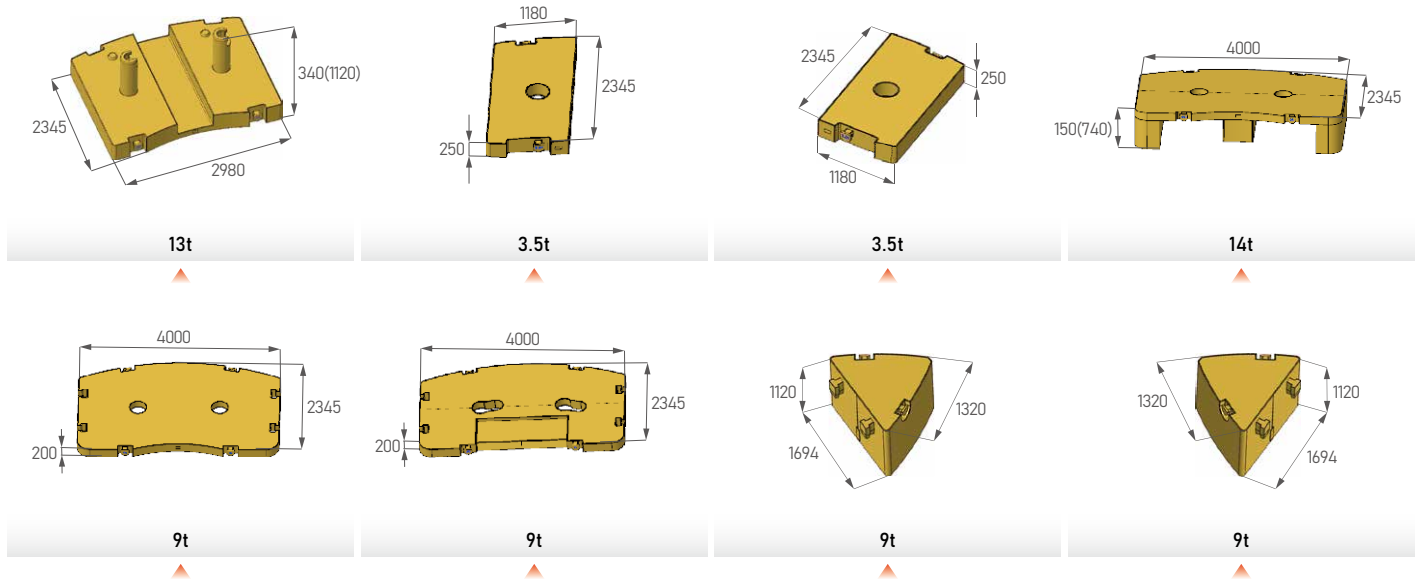
Total weight 总重量	①	②	③	④	⑤	⑥	⑦	⑧
	13t	3.5t	3.5t	14t	9t	9t	9t	9t
0t								
13t	•							
20t	•	•	•					
34t	•	•	•	•				
43t	•	•	•	•	•			
52t	•	•	•	•	•	•		
70t	•	•	•	•	•	•	•	•

Transport Dimensions

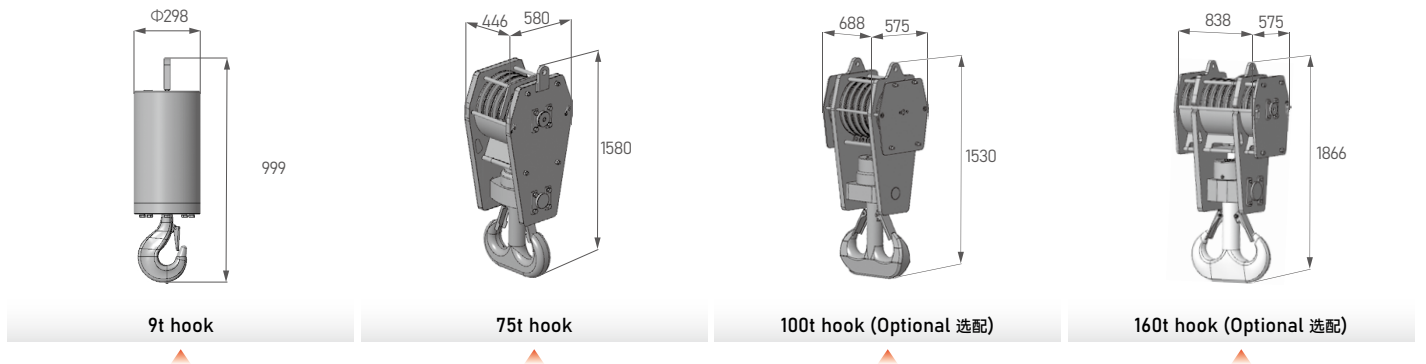
运输尺寸

Unit: mm

Counterweight 配重



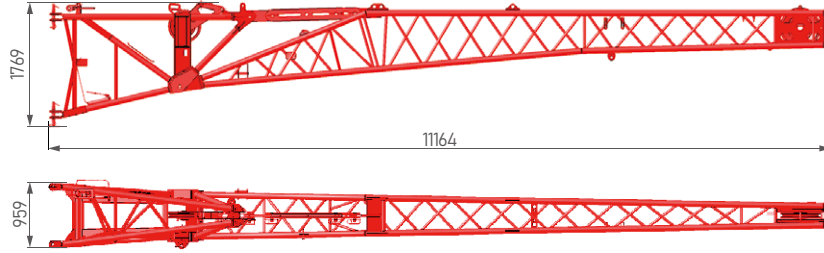
Hook 吊钩



Jib Combinations

副臂组合

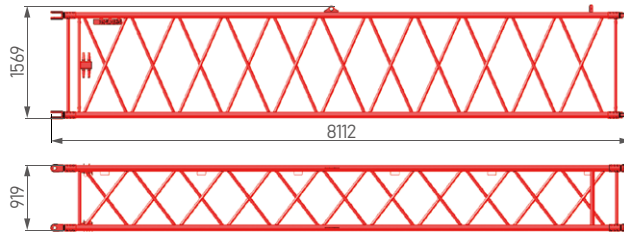
① 1377kg



② 464kg



③ 697kg



Crane Introduction

整机介绍

Carrier 下车

Driver's cab 驾驶室

- Self-developed full width cab in ergonomic design, featuring vibration and external noise isolation.
- Equipped with pneumatic suspension seats with headrest, safety belt, adjustable steering wheel, large rear-view mirror, defroster, HVAC, stereo radio, and full set of instrument and controls, realizing safety and comfort.
- 自主开发全宽钢整体式钢结构驾驶室, 采用人体工程学原理设计, 减震性和封闭性优良。
- 配备气动悬置的驾驶座与副驾座、三点安全带、可调整式的转向盘、大视野后视镜、配有头枕的舒适驾驶椅、防雾扇、冷暖空调、立体收音机等, 控制仪器和仪表齐全, 更加舒适、安全、人性化。

Carrier frame 车架

- Designed and manufactured by Sany, the torsion resistant box-type structure is welded by fine grain high-strength steel, featuring increased bearing capacity.
- 三一设计、制造, 由细晶粒高强度钢板焊接而成的防扭转箱形结构, 承载能力强。

Chassis engine 底盘发动机

- Model: DF Cummins QSZ14-C460 inline six-cylinder diesel engine with watercooler and inter cooler.
- Emission standard: Euro III.
- Fuel reservoir capacity: 450L.
- 型式: 康明斯QSZ14-C460, 直列六缸、水冷却、增压中冷、柴油发动机。
- 排放标准: 欧三。
- 燃料箱有效容积: 450L。

Transmission 变速箱

- FAST 12-speed automatic transmission with a hydraulic retarder, 12 forward gears, 2 reversing gears, large speed ratio range, adaptable to slope climbing and high-speed traveling.
- FAST自动变速箱, 带液力缓速器, 变速箱有12个前进挡、2个后退挡, 速比范围大, 既可满足低速爬坡又可满足高速行驶。

Transmission shaft 传动轴

- The drive shaft uses an end-face gear coupling, which transmits large torque and ensures smooth and reliable transmission.
- 采用端面齿联结传动轴, 传递扭矩大, 传动平稳、可靠。

Axle 车桥

- Axles 1, 2, 4, 5 are drive axles of planetary transmission with interwheel differential lock, and axle 2, 4 is fitted with inter-axle differential.
- All axles are steered. Axles 1, 2 adopt power steering with linkage feedback, and axles 3, 4, 5 are steered hydraulically.
- 1、2、4、5桥驱动, 所有驱动桥为行星传动带有轮间差速锁, 2、4桥带有轴间差速锁。
- 全桥转向, 1、2桥采用杆系反馈的液压助力转向系统, 3、4、5桥采用电液控制转向。

Suspension system 悬挂系统

- Front suspension is realized by hydro-pneumatic suspension, and rear oscillation leaf spring. Driving comfort and lateral stability is therefore guaranteed on rough terrains and conditions.
- 前轴采用油气悬架, 后轴采用摆动支架式钢板弹簧平衡悬架系统; 保证车辆行驶的平顺性和侧翻稳定性, 驾驶舒适。

Steering 转向系统

- Axles 1, 2 adopt mechanical steering mechanism, and axles 3, 4, 5 are steered hydraulically.
- 1、2桥机械式转向机构, 3、4、5桥电液辅助转向。

Tires 轮胎

- Radial tires sized 445/95R25, commonly used for heavy-duty trucks.
- 子午线轮胎, 全车使用445/95R25, 广泛适用于重型汽车, 通用性强。

Wheel formula 车轮模式

- 10×8×10.

Outrigger 支腿

- H-type layout, four point support with high strength steel plate, easy to operate, outrigger beam hydraulically telescoping, jack telescoping protected by two-way holding valve.
- H型支腿4点支撑, 易操作、稳定性强; 采用细晶粒高强度钢板材料, 一、二级支腿全液压横向伸缩。垂直油缸采用双向液压锁进行安全保护。

Brake 制动系统

- The braking system includes service brake & parking brake & emergency brake & assisting brake.
- Service brake: air servo, dual circuit; 1, 2 axles disc brake, 3, 4, 5 axles adopts drum brake, delivering stronger braking performance.
- Parking brake: functioning at axles 2, 3, 4, 5 by spring-loaded air chamber.
- Emergency brake: performed by accumulator releasing pressure.
- Assisting brake: transmission hydraulic retarder, safety assured when driving down long slopes.
- 制动系统包括行车制动、驻车制动、应急制动和辅助制动。
- 行车制动采用双回路制动系统, 所有车轮均用空气伺服制动器, 1、2桥采用盘式制动, 3、4、5桥采用鼓式制动, 制动能力更强。
- 驻车制动是通过气室内弹簧作用在第二、三、四、五桥上。
- 应急制动阀由蓄能器储能断气制动兼做应急制动。
- 辅助制动为液力缓速器制动, 保证在长下坡时的制动安全, 保证行车的安全可靠。

Electrical system 电气系统

- 2*12V maintenance-free battery with a mechanical power switch, the overall power can be cut off manually. CAN instrument, data integration between superstructure and chassis.
- 2*12V免维护蓄电池, 配有机械式电源总开关, 可手动切断整车电源; 总线控制系统, 可实现上下车信息交互。

Crane Introduction

整机介绍

Operator's cab 操纵室

- Curved track sliding door, foldable front step and electric side step. The seat and armrest can be adjusted steplessly in multi ways electrically. Automotive-grade integrated hard keys, auto air conditioning system gives out airflow from various vents once pressing the virtual key. Windshield wiper covers large area, ensuing clear vision in heavy rains. 10.1" frameless displays of all new UI is equipped. Operation is realized via touchscreen and buttons.
- 变轨滑移门, 电动滑移踏板, 折叠式前踏板; 座椅、扶手箱多维度电动无极调节; 汽车级集成式硬质按键, 配置全自动空调, 多通道立体送风系统, 虚拟空调按键, 前窗分体式大面积雨刮; 10.1寸无框大屏, 全新UI界面, 触摸、按键多模式操作。

Engine 发动机

- Model: Cummins QSB6.7 inline six-cylinder diesel engine with watercooler and inter cooler.
- Emission standard: E3A .
- Fuel reservoir capacity: 380L.
- 型式: 康明斯 QSB6.7, 直列六缸、水冷却、增压中冷、柴油发动机。
- 排放标准: E3A。
- 燃料箱有效容积: 380L。

Boom & telescoping system 伸缩系统

- Single cylinder pin telescoping with electro hydraulic control, functioning automatic telescoping.
- Using multi-level pressure control, a number of telescopic balance valve cores, mechanic and hydraulic interlock of cylinder pins and boom pins, to ensure safe and reliable functioning.
- Oval shape seven-section boom with high strength steel plate. The jib uses a mechanical luffing system.
- 采用单缸插销技术, 通过电液控制系统实现缸销、臂销的插拔动作, 配置自动伸缩功能。
- 采用多级压力控制, 多个伸缩平衡阀芯, 缸销臂销的机械液压的双重互锁机构, 保证了伸缩系统安全可靠的工作。
- 7节主臂, 由高强度焊接结构钢制成, 卵形截面。副臂采用机械变幅。

Hoist 起升机构

- Efficient and energy saving speed regulation is realized by double variables of pump and motor. Winch balance valve coupled with exclusive anti-slip tech contribute to smoother hoisting.
- Normally closed type winch brake and winch balance valve are set to prevent hook falling and stalling.
- Standard 9t & 75t hooks.
- 泵、马达双变量调速, 高效节能。卷扬平衡阀与独特的防溜钩技术完美结合, 重物起落平稳。
- 常闭式卷扬制动器, 并设置卷扬平衡阀, 可防止落钩失速。
- 标配9t、75t吊钩。

Luffing system 变幅系统

- Passive luffing down with balance system, reducing energy cost yet raising stability. Uses electric proportional control balance valve. Luffing angle: $0^{\circ} \sim 80^{\circ}$.
- 自重落幅, 更加节能, 采用电比例控制平衡阀, 变幅角度: $0^{\circ} \sim 80^{\circ}$ 。

Counterweight 配重

- Movable counterweight features combinations: 13t、20t、34t、43t、52t、70t. CW assembly and disassembly controlled by remote device.
- 组合式可变平衡重。13t、20t、34t、43t、52t、70t共7种组合方式, 满足不同工况的需求, 最大限度发挥结构件性能, 可遥控拆卸及安装, 微动性好。

Slewing 回转系统

- Integrated slewing buffer valve with free swing function. Smooth slewing start & control with excellent inching performance.
- 带集成回转缓冲阀, 具有自由滑转功能, 回转启动和控制平稳, 微动性卓越。

Hydraulics 液压系统

- Double pump intelligent flow distribution system to realize independent luffing and confluence telescoping, combined motion stability.
- Load sensing variable piston pump can control flow in high precision, reducing energy loss significantly.
- Electrically controlled valve functions flow compensation and load sensing control, securing stable control over single and combined motions.
- Winch adopts electric control variable motor, high efficiency at high speed, stable and low noise at low speed. The max. single rope lifting speed of main winch and auxiliary are 135m/min.
- 采用全新开发双泵智能流量系统, 变幅独立, 伸臂合流, 复合动作操控性强。
- 采用国际知名品牌电比例负载敏感双联柱塞泵, 高精度流量控制, 能量损耗低。
- 电比例负载敏感多路阀, 具备流量补偿、负载反馈控制功能, 轻松实现单个动作和组合动作的稳定控制。
- 卷扬采用电控变量马达, 高速效率高, 低速稳定噪音小; 主副卷扬单绳最大速度达135m/min。

Control system 控制系统

- Vehicle data display system: equipped with multiple sensors to give timely feedback of data information, achieving real-time monitoring of the vehicle working state.
- Man-machine interaction interface: more user-friendly interface with rich and clear information. Customers can set the vehicle controllability according to their personal operation habits and different operating conditions to fully meet the preferred needs of customers.
- 整车数据显示系统: 配置丰富的传感器件, 及时反馈数据信息, 实现实时监控, 确保随时掌控整车工作状态。
- 人机交互界面: 人机交互界面设计人性化, 信息丰富而清晰, 客户可根据个人操作习惯和不同使用条件自行设置整车操控性, 充分满足客户的个性化需求。

Safety equipment 安全装置

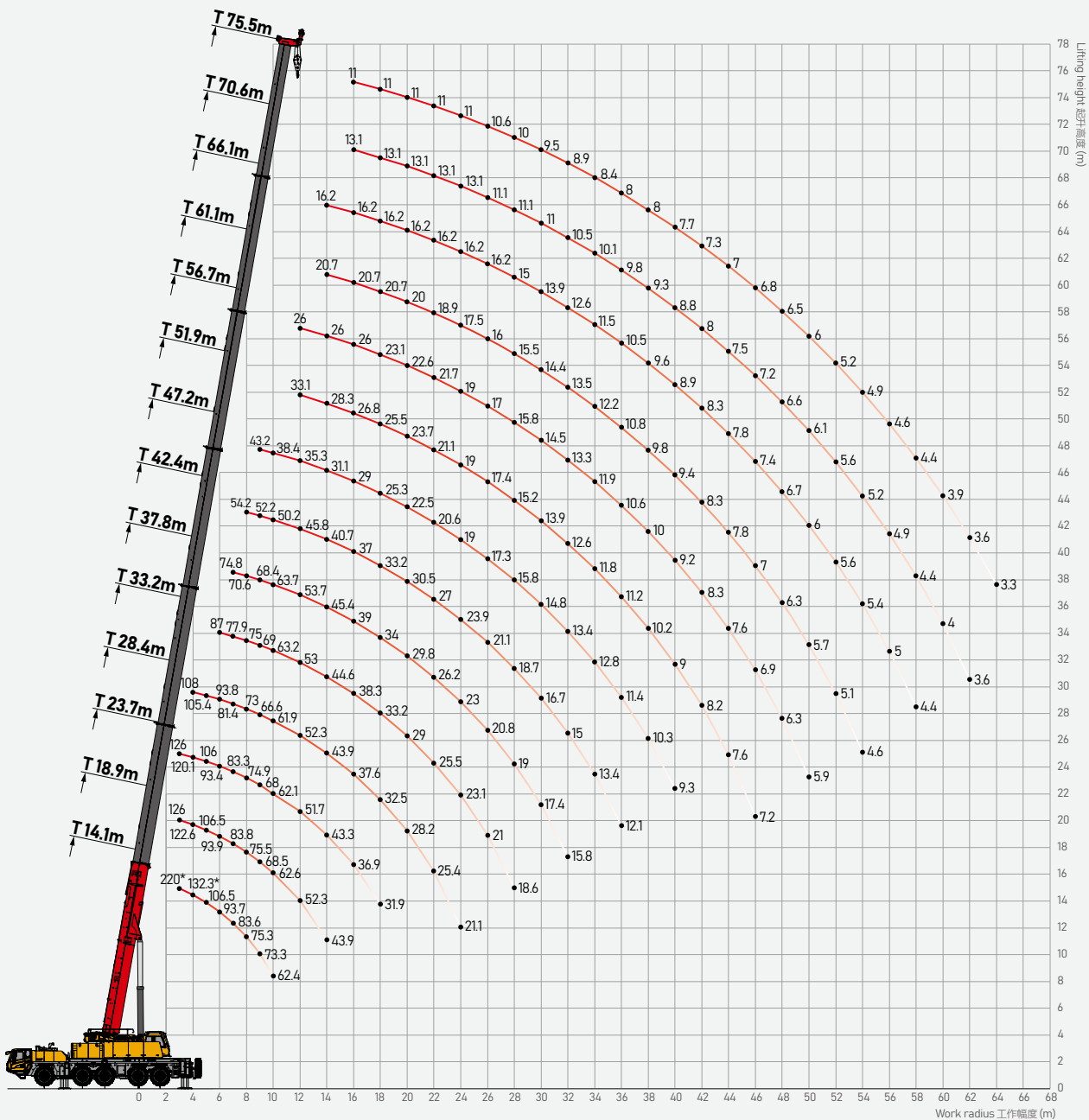
- Load moment indicator: A method of analytical mechanics is adopted and a moment limiter calculation system based on the hoisting mechanics model is established. Through online empty-load calibration, the rated hoisting accuracy can reach $\pm 3\%$ to fully protect the hoisting operation.
- The hydraulic system is equipped with balance valve, relief valve, two-way holding valve, etc. to realize stability and reliability.
- Boom head and jib head are equipped with A2B switch to prevent the wire rope from over winding.
- The boom head is equipped with anemometer to detect whether the wind speed at heights exceeds the allowable range.
- The length & angle sensor and pressure sensor are equipped to display the operating status of the crane in real time, automatically cut off dangerous actions, and give a buzzer alarm.
- 采用分析力学方法, 建立了基于吊重力学模型的力矩限制器计算系统, 通过在线空载标定, 吊重精度达到 $\pm 3\%$ 。
- 液压系统配置液压平衡阀、溢流阀、双向液压锁等元件, 实现液压系统稳定可靠。
- 主、副臂臂端配置高度限位器, 防止钢丝绳过卷。
- 臂端装有风速仪, 检测高空风速是否超过可作业允许范围。
- 配置长度角度传感器、压力传感器, 实时显示起重机作业状态, 自动切断危险动作。

Optional equipment at extra fees 选配

- 100t & 160t hook, 8m boom extension, outrigger pad, auxiliary winch assembly / Customized painting / Other equipment available upon request.
- 100t、160t吊钩, 8m延伸臂, 支腿垫板, 副卷扬装配总成 / 特殊涂装 / 其他配置视需求定。

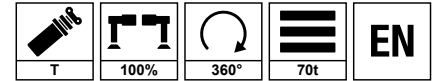
Operating Range - Telescopic Boom (T)

起升高度曲线 - 主臂



Load Chart - Telescopic Boom (T)

性能表 - 主臂



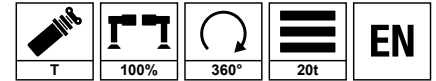
Unit: t

	14.1	18.9	23.7	28.4	33.2	37.8	42.4	47.2	51.9	56.7	61.1	66.1	70.6	75.5	
3	220*	126	126												3
3.5	132.3*	126	124.4												3.5
4	122.4	122.6	120.1	108											4
4.5	113.9	114	113.5	108											4.5
5	106.3	106.5	106	105.4											5
5.5	99.7	99.8	99.3	99.8	92.2										5.5
6	93.7	93.9	93.4	93.8	87										6
6.5	88.4	88.6	88.1	84.1	83	78.3									6.5
7	83.6	83.8	83.3	81.4	77.9	74.8									7
7.5	79.3	79.5	78.9	77.7	76.3	72.2	56.2								7.5
8	75.3	75.5	74.9	73	75	70.6	54.2								8
9	73.3	68.5	68	66.6	69	68.4	52.2	43.2							9
10	62.4	62.6	62.1	61.9	63.2	63.7	50.2	38.4							10
12		52.3	51.7	52.3	53	53.7	45.8	35.3	33.1	26					12
14		43.9	43.3	43.9	44.6	45.4	40.7	31.1	28.3	26	20.7	16.2			14
16			36.9	37.6	38.3	39	37	29	26.8	26	20.7	16.2	13.1	11	16
18			31.9	32.5	33.2	34	33.2	25.3	25.5	23.1	20.7	16.2	13.1	11	18
20				28.2	29	29.8	30.5	22.5	23.7	22.6	20	16.2	13.1	11	20
22				24.5	25.5	26.2	27	20.6	21.1	21.7	18.9	16.2	13.1	11	22
24				21.1	23.1	23	23.9	19	19	19	17.5	16.2	13.1	11	24
26					21	20.8	21.1	17.3	17.4	17	16	16.2	11.1	10.6	26
28					18.6	19	18.7	15.8	15.2	15.8	15.5	15	11.1	10	28
30						17.4	16.7	14.8	13.9	14.5	14.4	13.9	11	9.5	30
32						15.8	15	13.4	12.6	13.3	13.5	12.6	10.5	8.9	32
34							13.4	12.8	11.8	11.9	12.2	11.5	10.1	8.4	34
36							12.1	11.4	11.2	10.6	10.8	10.5	9.8	8	36
38								10.3	10.2	10	9.8	9.6	9.3	8	38
40								9.3	9	9.2	9.4	8.9	8.8	7.7	40
42									8.2	8.3	8.3	8.3	8	7.3	42
44									7.6	7.6	7.8	7.8	7.5	7	44
46									7.2	6.9	7	7.4	7.2	6.8	46
48										6.3	6.3	6.7	6.6	6.5	48
50										5.9	5.7	6	6.1	6	50
52											5.1	5.6	5.6	5.2	52
54											4.6	5.4	5.2	4.9	54
56												5	4.9	4.6	56
58												4.4	4.4	4.4	58
60													4	3.9	60
62													3.6	3.6	62
64														3.3	64



Remark: "*" represents the load capacity index.
备注: "*"代表负荷能力指数。

Load Chart - Telescopic Boom (T)

性能表 - 主臂

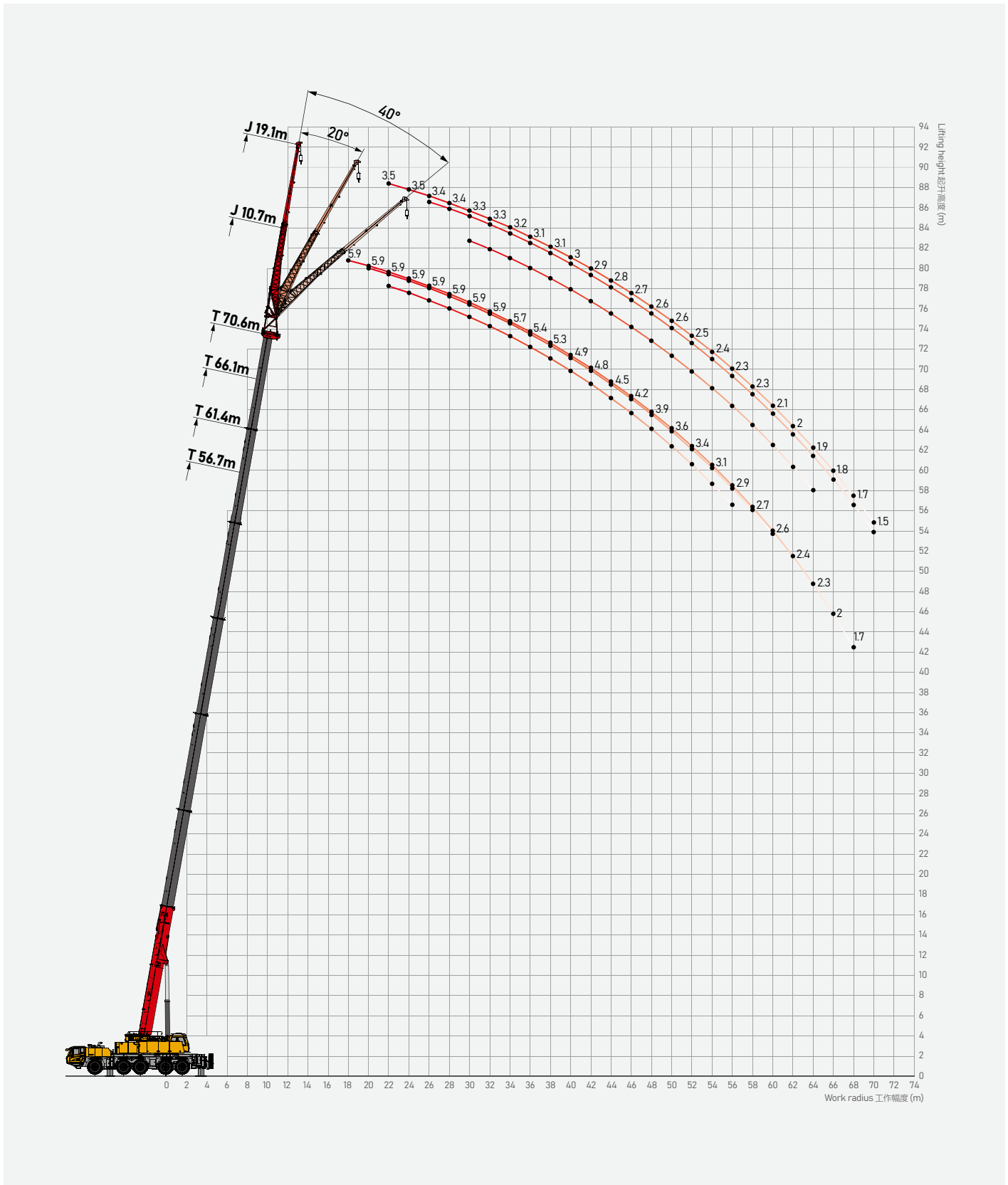


Unit: t

	14.1	18.9	23.7	28.4	33.2	37.8	42.4	47.2	51.9	56.7	61.1	66.1	70.6	75.5	
3	126	126	126												3
3.5	126	126	124.4												3.5
4	118.5	118.6	118.1	108											4
4.5	110.2	110.3	109.8	108											4.5
5	102.9	103.1	102.5	103											5
5.5	96.1	96.3	95.6	96.2	92.2										5.5
6	88.2	88.4	87.7	88.4	87										6
6.5	81.4	81.7	81	81.6	82.3	78.3									6.5
7	75.5	75.8	75.1	75.7	76.4	74.8									7
7.5	70	70.4	69.6	70.3	71.2	72	56.2								7.5
8	64.6	64.9	64.1	64.8	65.7	66.6	54.2								8
9	52.6	53.2	53.1	53.2	54.6	56	52.2	43.2							9
10	42.2	44.8	45.5	44.8	46.6	47.9	46.7	38.4							10
12		31.5	32.1	31.9	33.1	34.3	33.2	33	32.2	26					12
14		23.4	24	23.8	26.5	26.1	25.5	25	24.9	24.3	20.7	16.2			14
16			18.6	20.4	21	20.5	20.2	20.2	19.8	20	19.2	16.2	13.1	11	16
18			16.6	17.1	17	16.6	17.4	16.3	16.6	17.3	17.1	15.7	13.1	11	18
20				14.1	14.1	14.9	14.4	13.3	14.6	14.8	14.5	13.8	13.1	11	20
22				11.8	12	12.5	12.1	11	12.6	12.5	12.2	11.5	11	11	22
24				7.5	10.8	10.6	10.2	9.5	10.7	10.6	10.3	9.7	9.1	9.2	24
26					9.3	9.1	8.7	8.6	9.2	9.1	8.8	8.1	7.6	7.7	26
28					8	7.8	7.4	7.8	7.9	7.8	7.5	6.9	6.3	6.4	28
30						6.7	6.3	7.1	6.8	6.7	6.4	5.8	5.3	5.3	30
32						5.8	5.4	6.3	5.9	5.8	5.5	4.9	4.4	4.4	32
34							4.6	5.5	5.1	5	4.7	4.1	3.6	3.6	34
36							3.9	4.8	4.4	4.3	4	3.4	2.9	2.9	36
38								4.1	3.7	3.6	3.4	2.8	2.3	2.3	38
40								3.6	3.2	3.1	2.8	2.2	1.7	1.7	40
42									2.7	2.6	2.3	1.7	1.2	1.3	42
44									2.3	2.2	1.9	1.3	/	0.8	44
46										1.8	1.5	0.9			46
48										1.4	1.1				48
50										1.1					50

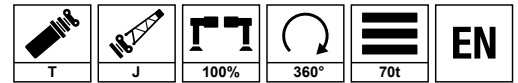
Load Chart - Telescopic Boom + Fixed Jib (TJ)

起升高度曲线 - 主臂 + 副臂



Load Chart - Telescopic Boom + Fixed Jib (TJ)

性能表 - 主臂 + 副臂

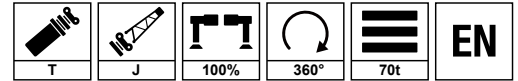


Unit: t

	56.7m+10.7m			61.4m+10.7m			66.1m+10.7m			70.6m+10.7m			
	0°	20°	40°	0°	20°	40°	0°	20°	40°	0°	20°	40°	
14	12												14
16	12												16
18	12	7.7		10.6			8.9			5.9			18
20	12	7.4	5.1	10.6	8.1		8.9	8		5.9	5.6		20
22	11.6	7.2	5	10.5	7.9	5.2	8.9	8	5.4	5.9	5.6	4.8	22
24	11.2	6.9	4.9	10.1	7.7	5.1	8.9	8	5.4	5.9	5.6	4.8	24
26	10.7	6.6	4.7	9.6	7.3	5	8.5	7.8	5.4	5.9	5.6	4.8	26
28	10.2	6.3	4.6	9.2	7	5	8.2	7.4	5.4	5.9	5.6	4.8	28
30	9.6	6	4.6	8.7	6.6	5	7.7	7.1	5.4	5.9	5.6	4.8	30
32	9	5.7	4.4	8.2	6.3	4.9	7.3	6.8	5.4	5.9	5.5	4.8	32
34	8.3	5.4	4.3	7.7	6	4.9	7	6.5	5.4	5.7	5.4	4.8	34
36	7.7	5.1	4.2	7.1	5.7	4.8	6.6	6.2	5.4	5.4	5.2	4.8	36
38	7.1	4.9	4.2	6.7	5.4	4.7	6.2	5.8	5.4	5.3	5	4.7	38
40	6.6	4.7	4	6.2	5	4.7	5.8	5.4	5.4	4.9	4.7	4.7	40
42	6.2	4.6	4	5.8	4.8	4.6	5.4	5	5.3	4.8	4.5	4.6	42
44	5.7	4.3	4	5.4	4.5	4.4	5	4.7	4.8	4.5	4.2	4.3	44
46	5.1	4.1	3.9	4.8	4.2	4.2	4.6	4.3	4.4	4.2	3.9	4	46
48	4.5	3.9	3.8	4.4	4	3.9	4.3	4.1	4.1	3.9	3.7	3.8	48
50	3.9	3.6		4	3.7	3.6	4	3.8	3.8	3.6	3.4	3.4	50
52	3.6	3.3		3.7	3.4		3.7	3.5	3.5	3.4	3.2	3.2	52
54	3.3			3.4	3.2		3.4	3.3	3.3	3.1	3	3	54
56	3.1			3.1	3		3.1	3		2.9	2.9	2.9	56
58				2.9			2.8	2.6		2.7	2.6		58
60				2.6			2.6			2.6	2.5		60
62							2.4			2.4			62
64							2.1			2.3			64
66										2			66
68										1.7			68
70													70
	2	2	2	2	2	2	2	1	1	1	1	1	
	2#	92	92	92	92	92	92	92	92	92	92	92	2#
	3#	92	92	92	92	92	92	92	92	92	92	92	3#
	4#	92	92	92	92	92	92	92	92	92	92	92	4#
	5#	46	46	46	92	92	92	92	92	92	92	92	5#
	6#	46	46	46	46	46	46	92	92	92	92	92	6#
	7#	46	46	46	46	46	46	46	46	46	92	92	7#

Load Chart - Telescopic Boom + Fixed Jib (TJ)

性能表 - 主臂 + 副臂

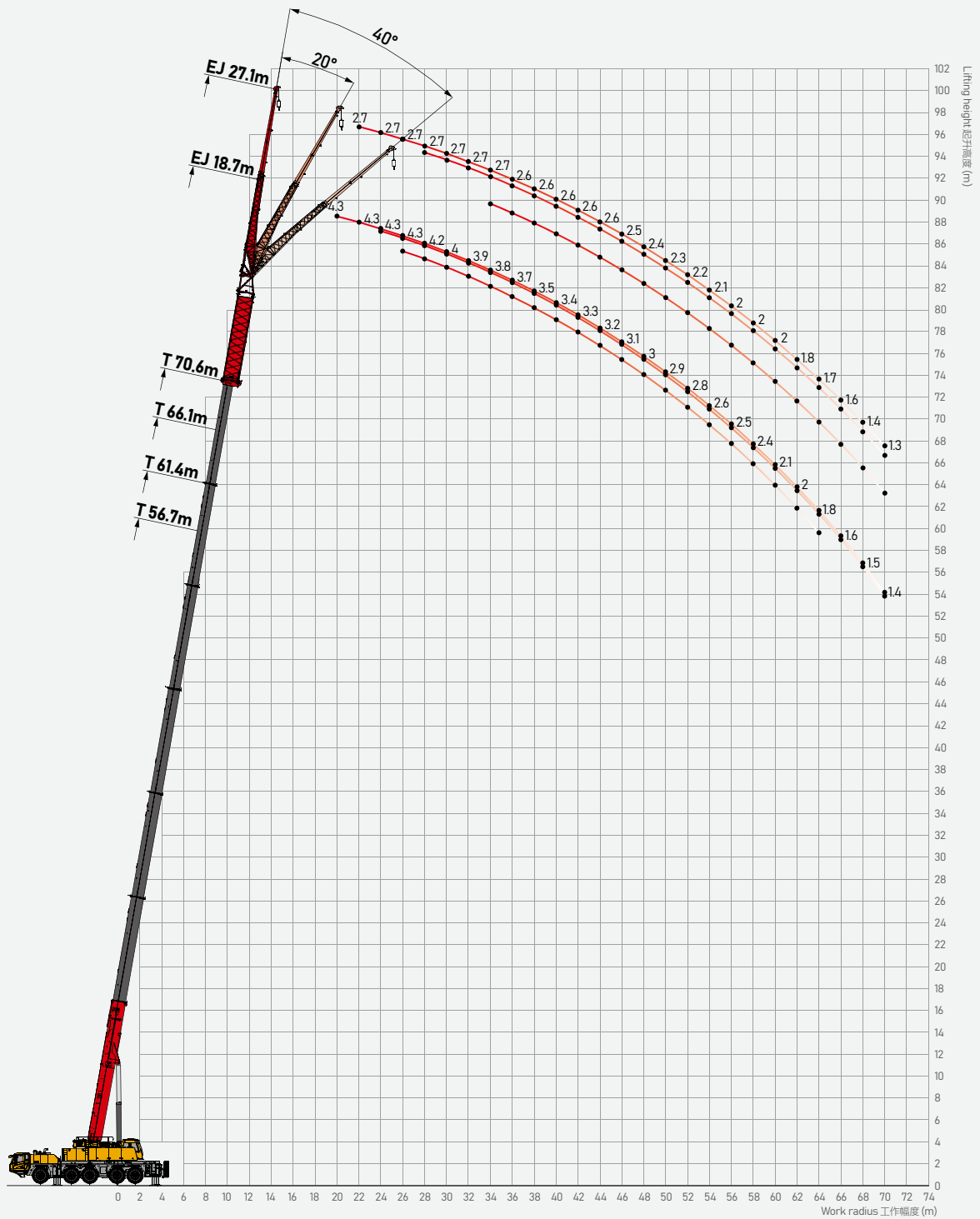


Unit: t

	56.7m+19.1m			61.4m+19.1m			66.1m+19.1m			70.6m+19.1m			
	0°	20°	40°	0°	20°	40°	0°	20°	40°	0°	20°	40°	
18	5												18
20	4.8			4.4			4						20
22	4.7	4.2		4.3			3.9			3.5			22
24	4.5	4		4.2	3.8		3.8	3.7		3.5			24
26	4.3	3.8	2.2	4	3.7		3.7	3.6		3.4	3.3		26
28	4.2	3.6	2.1	3.9	3.5	2.2	3.7	3.4	2.2	3.4	3.2		28
30	4	3.4	2	3.7	3.4	2.1	3.6	3.3	2.2	3.3	3.1	2.2	30
32	3.8	3.3	2	3.7	3.2	2	3.5	3.2	2.1	3.3	3	2.2	32
34	3.7	3.1	1.9	3.6	3.1	2	3.4	3	2	3.2	3	2.1	34
36	3.5	3	1.8	3.4	3	1.9	3.3	3	2	3.1	2.9	2.1	36
38	3.4	2.9	1.8	3.3	2.9	1.9	3.2	2.9	1.9	3.1	2.8	2	38
40	3.2	2.7	1.8	3.2	2.7	1.8	3.1	2.7	1.9	3	2.7	1.9	40
42	3.1	2.6	1.8	3.1	2.6	1.8	3.1	2.6	1.9	2.9	2.6	1.9	42
44	3	2.5	1.8	3	2.5	1.8	3	2.5	1.8	2.8	2.6	1.8	44
46	2.8	2.4	1.8	2.9	2.4	1.8	2.9	2.4	1.8	2.7	2.5	1.8	46
48	2.7	2.2	1.7	2.8	2.3	1.7	2.8	2.3	1.8	2.6	2.4	1.8	48
50	2.6	2.2	1.7	2.6	2.2	1.7	2.6	2.2	1.8	2.6	2.3	1.8	50
52	2.6	2.1	1.6	2.6	2.1	1.7	2.6	2.2	1.8	2.5	2.2	1.8	52
54	2.5	2	1.6	2.5	2	1.7	2.6	2.1	1.7	2.4	2.2	1.8	54
56	2.4	1.9	1.6	2.4	1.9	1.7	2.5	2	1.7	2.3	2.1	1.7	56
58	2.3	1.8		2.4	1.9	1.7	2.5	1.9	1.7	2.3	2	1.7	58
60	2.2			2.3	1.8	1.6	2.4	1.8	1.7	2.1	1.8	1.7	60
62	2.1			2.1	1.8		2.3	1.8	1.7	2	1.8	1.7	62
64	2			2	1.7		2.1	1.8	1.6	1.9	1.7	1.7	64
66				1.9			2	1.7		1.8	1.6		66
68				1.7			1.9	1.6		1.7	1.5		68
70							1.7			1.5	1.4		70
	1	1	1	1	1	1	1	1	1	1	1	1	
	2#	92	92	92	92	92	92	92	92	92	92	92	2#
	3#	92	92	92	92	92	92	92	92	92	92	92	3#
	4#	92	92	92	92	92	92	92	92	92	92	92	4#
	5#	46	46	46	92	92	92	92	92	92	92	92	5#
	6#	46	46	46	46	46	46	92	92	92	92	92	6#
	7#	46	46	46	46	46	46	46	46	46	92	92	7#

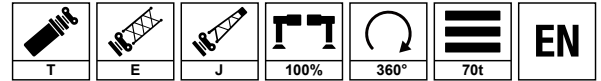
Operating Range - Telescopic Boom + Boom Extension + Fixed Jib (TEJ)

起升高度曲线 - 主臂延伸节 + 副臂



Load Chart - Telescopic Boom + Boom Extension + Fixed Jib (TEJ)

性能表 - 主臂延伸节 + 副臂

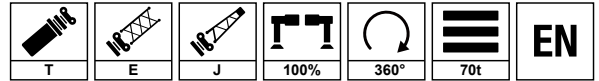


Unit: t

	56.7m+18.7m			61.4m+18.7m			66.1m+18.7m			70.6m+18.7m			
	0°	20°	40°	0°	20°	40°	0°	20°	40°	0°	20°	40°	
16	9.4												16
18	9.1			6.5			5.3						18
20	8.8	7.4		6.5	6.1		5.3						20
22	8.6	7.4	7	6.5	6.1		5.3	5		4.3			22
24	8.3	7.2	6.6	6.5	6.1	5.8	5.3	4.9	4.9	4.3	4		24
26	8	7	6.3	6.5	5.8	5.5	5.1	4.8	4.7	4.3	4	4	26
28	7.8	6.7	6.2	6.4	5.7	5.4	5	4.6	4.7	4.2	3.8	3.9	28
30	7.6	6.5	5.9	6.2	5.4	5.2	4.8	4.4	4.5	4	3.8	3.8	30
32	7.3	6.2	5.7	6	5.3	5	4.6	4.3	4.3	3.9	3.7	3.7	32
34	7.1	6	5.4	5.8	5.1	4.8	4.5	4.2	4.2	3.8	3.6	3.6	34
36	6.7	5.8	5.3	5.5	4.9	4.6	4.3	4	4	3.7	3.4	3.4	36
38	6.4	5.6	5.1	5.3	4.7	4.5	4.2	3.8	3.8	3.5	3.3	3.3	38
40	5.8	5.4	5	4.9	4.6	4.3	4.1	3.8	3.7	3.4	3.2	3.2	40
42	5.4	5.2	4.8	4.6	4.4	4.2	3.9	3.6	3.6	3.3	3.1	3.1	42
44	4.8	4.9	4.6	4.3	4.2	4.1	3.8	3.5	3.4	3.2	3	3	44
46	4.4	4.6	4.5	4	4	3.9	3.7	3.4	3.4	3.1	3	3	46
48	4.1	4.3	4.2	3.8	3.8	3.8	3.5	3.3	3.3	3	2.9	2.8	48
50	3.8	3.9	3.9	3.6	3.5	3.5	3.4	3.3	3.2	2.9	2.8	2.7	50
52	3.3	3.7	3.7	3.3	3.4	3.4	3.3	3.2	3.1	2.8	2.7	2.6	52
54	3	3.3		3	3	3.2	3.1	3	3	2.6	2.6	2.6	54
56	2.6	3		2.7	2.8	2.9	2.9	2.9	2.9	2.5	2.4	2.5	56
58	2.4	2.6		2.6	2.6	2.7	2.8	2.7	2.7	2.4	2.3	2.3	58
60	2.1			2.3	2.4		2.6	2.6	2.6	2.1	2.2	2.2	60
62	2			2.1	2.2		2.4	2.4		2	2	2	62
64	1.7			1.9			2.1	2.2		1.8	1.8	1.8	64
66				1.7			2	2		1.6	1.6		66
68				1.6			2			1.5	1.5		68
70							1.8			1.4	1.4		70
	2	1	1	1	1	1	1	1	1	1	1	1	
	2#	92	92	92	92	92	92	92	92	92	92	92	2#
	3#	92	92	92	92	92	92	92	92	92	92	92	3#
	4#	92	92	92	92	92	92	92	92	92	92	92	4#
	5#	46	46	46	92	92	92	92	92	92	92	92	5#
	6#	46	46	46	46	46	46	92	92	92	92	92	6#
	7#	46	46	46	46	46	46	46	46	46	92	92	7#

Load Chart - Telescopic Boom + Boom Extension + Fixed Jib (TEJ)

性能表 - 主臂延伸节 + 副臂

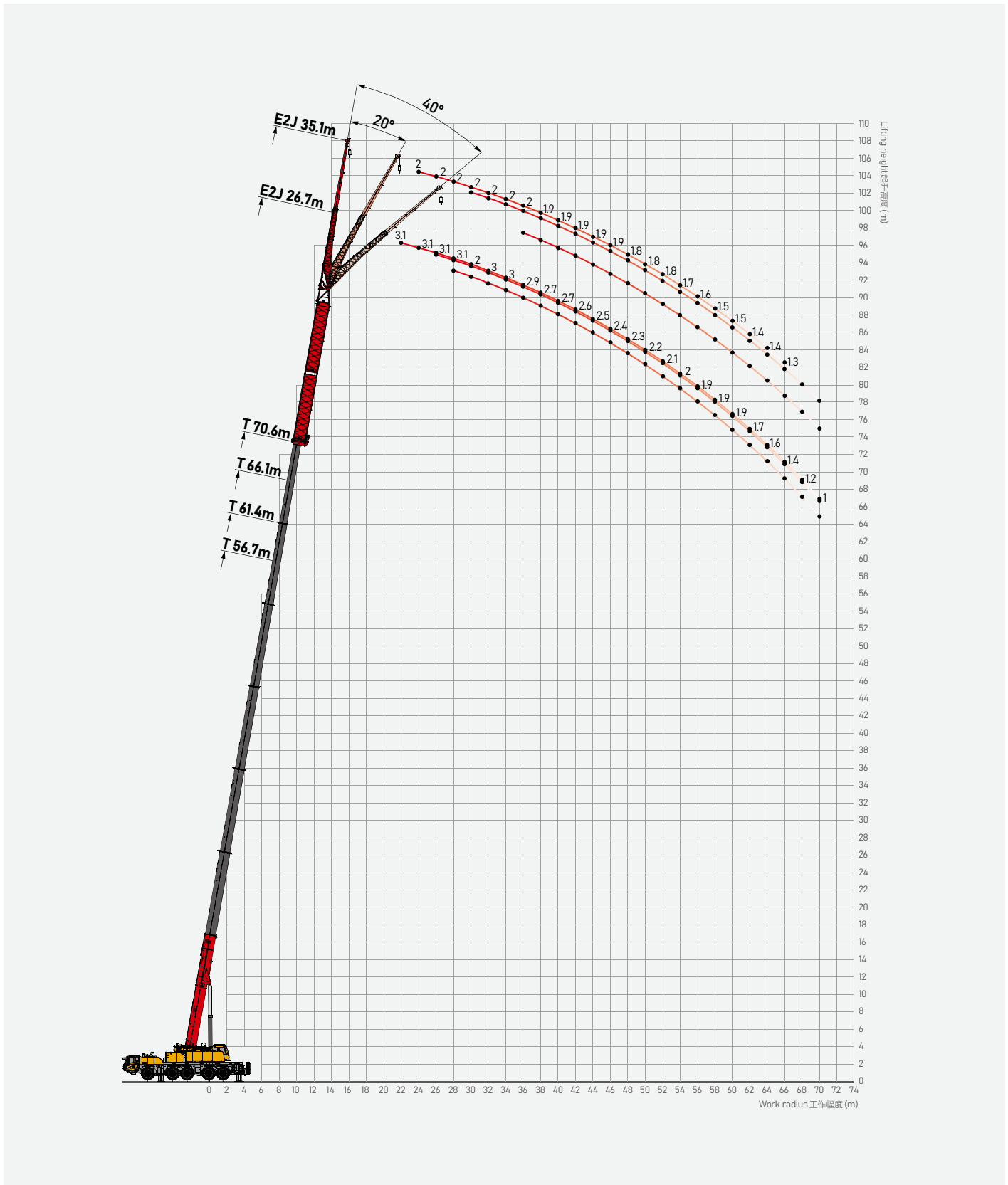


Unit: t

	56.7m+27.1m			61.4m+27.1m			66.1m+27.1m			70.6m+27.1m				
	0°	20°	40°	0°	20°	40°	0°	20°	40°	0°	20°	40°		
18	4.2												18	
20	4.1			3.7									20	
22	4			3.7			3.2			2.7			22	
24	3.9	3.4		3.6			3.2			2.7			24	
26	3.8	3.3		3.6	3.1		3.2	3		2.7			26	
28	3.7	3.2	2.8	3.5	3		3.2	3		2.7	2.6		28	
30	3.6	3	2.8	3.4	3	2.7	3.2	2.9	2.7	2.7	2.6		30	
32	3.6	3	2.6	3.3	2.9	2.6	3.1	2.9	2.7	2.7	2.5		32	
34	3.4	2.8	2.6	3.3	2.8	2.6	3.1	2.9	2.6	2.7	2.5	2.4	34	
36	3.3	2.8	2.4	3.2	2.8	2.6	3.1	2.8	2.6	2.6	2.5	2.4	36	
38	3.2	2.6	2.4	3.1	2.7	2.5	3.1	2.8	2.6	2.6	2.5	2.4	38	
40	3.2	2.6	2.3	3.1	2.6	2.4	3.1	2.7	2.6	2.6	2.4	2.3	40	
42	3.1	2.5	2.2	3.1	2.6	2.4	3	2.7	2.6	2.6	2.4	2.3	42	
44	3	2.4	2.2	3	2.6	2.3	2.9	2.6	2.5	2.6	2.3	2.3	44	
46	2.9	2.3	2.1	2.9	2.5	2.3	2.9	2.6	2.5	2.5	2.3	2.2	46	
48	2.9	2.2	2	2.8	2.4	2.2	2.8	2.6	2.5	2.4	2.2	2.2	48	
50	2.8	2.2	2	2.7	2.4	2.2	2.7	2.6	2.5	2.3	2.2	2.2	50	
52	2.6	2.1	1.9	2.6	2.3	2.2	2.6	2.6	2.5	2.2	2.2	2.2	52	
54	2.6	2.1	1.8	2.6	2.2	2.2	2.6	2.5	2.4	2.1	2.1	2.1	54	
56	2.5	2	1.8	2.6	2.2	2.1	2.6	2.4	2.4	2	2	2.1	56	
58	2.5	1.9	1.8	2.5	2.2	2.1	2.5	2.4	2.3	2	2	2	58	
60	2.4	1.9	1.7	2.4	2.1	2	2.4	2.3	2.2	2	1.9	1.9	60	
62	2.3	1.8		2.2	2	1.9	2.3	2.2	2.2	1.8	1.8	1.8	62	
64	2.1	1.8		2	1.8	1.9	2.1	2.1	2.2	1.7	1.8	1.8	64	
66	2	1.6		1.9	1.7	1.8	2	2	2.1	1.6	1.6	1.7	66	
68	1.7			1.6	1.5		1.8	1.8	1.9	1.4	1.5	1.6	68	
70	1.4			1.4	1.4		1.6	1.8	1.8	1.3	1.4	1.4	70	
	1	1	1	1	1	1	1	1	1	1	1	1		
	2#	92	92	92	92	92	92	92	92	92	92	92	2#	
	3#	92	92	92	92	92	92	92	92	92	92	92	3#	
	4#	92	92	92	92	92	92	92	92	92	92	92	4#	
	5#	46	46	46	92	92	92	92	92	92	92	92	5#	
	6#	46	46	46	46	46	46	92	92	92	92	92	6#	
	7#	46	46	46	46	46	46	46	46	46	92	92	92	7#

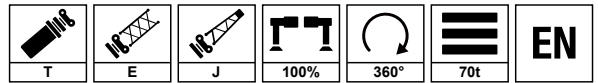
Operating Range - Telescopic Boom + Boom Extension + Fixed Jib (TE2)

起升高度曲线 - 主臂延伸节 + 副臂



Load Chart - Telescopic Boom + Boom Extension + Fixed Jib (TE2J)

性能表 - 主臂延伸节 + 副臂

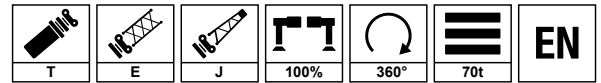


Unit: t

	56.7m+26.7m			61.4m+26.7m			66.1m+26.7m			70.6m+26.7m			
	0°	20°	40°	0°	20°	40°	0°	20°	40°	0°	20°	40°	
18	5.5												18
20	5.5			4.7			3.8						20
22	5.5	5.1		4.7	4.4		3.8			3.1			22
24	5.5	5	4.3	4.7	4.3		3.8	3.6		3.1			24
26	5.3	4.7	4.2	4.6	4.2	3.9	3.8	3.6		3.1	2.9		26
28	5.1	4.6	4.1	4.5	4.1	3.8	3.8	3.6	3.5	3.1	2.9	2.8	28
30	4.9	4.4	3.9	4.3	3.9	3.8	3.7	3.5	3.5	3.1	2.9	2.8	30
32	4.8	4.2	3.8	4.3	3.8	3.6	3.7	3.4	3.4	3	2.8	2.8	32
34	4.6	4.1	3.7	4.1	3.7	3.5	3.6	3.3	3.4	3	2.7	2.8	34
36	4.4	3.9	3.5	4	3.6	3.4	3.5	3.2	3.3	2.9	2.6	2.7	36
38	4.3	3.8	3.5	3.8	3.5	3.4	3.3	3.1	3.2	2.7	2.6	2.6	38
40	4.2	3.7	3.4	3.7	3.4	3.2	3.2	3	3	2.7	2.6	2.6	40
42	4	3.5	3.3	3.6	3.2	3.1	3.1	2.9	3	2.6	2.4	2.5	42
44	3.8	3.4	3.2	3.4	3.1	3	3	2.8	2.9	2.5	2.3	2.4	44
46	3.7	3.3	3.2	3.3	3	3	2.9	2.7	2.8	2.4	2.2	2.3	46
48	3.5	3.2	3	3.2	2.9	2.9	2.8	2.6	2.7	2.3	2.1	2.2	48
50	3.4	3.1	3	3.1	2.7	2.8	2.7	2.5	2.6	2.2	2.1	2.1	50
52	3.3	3	2.9	3	2.6	2.7	2.6	2.4	2.5	2.1	2	2	52
54	3.2	2.9	2.9	2.9	2.5	2.6	2.5	2.3	2.4	2	1.9	2	54
56	3	2.8	2.8	2.7	2.5	2.6	2.4	2.2	2.3	1.9	1.8	1.9	56
58	2.8	2.7	2.7	2.6	2.4	2.5	2.3	2.1	2.2	1.9	1.7	1.8	58
60	2.7	2.6	2.6	2.4	2.3	2.4	2.2	2.1	2.1	1.8	1.6	1.7	60
62	2.5	2.4		2.1	2.2	2.3	2	2	2	1.7	1.5	1.7	62
64	2.2	2.2		2	2	2.2	2	1.9	1.9	1.6	1.4	1.6	64
66	2			1.8	1.8		1.8	1.8	1.8	1.4	1.3	1.5	66
68	1.8			1.5	1.6		1.5	1.6		1.2	1.2	1.4	68
70	1.5			1.4			1.4	1.4		1	1.1	1.2	70
	1	1	1	1	1	1	1	1	1	1	1	1	
	2#	92	92	92	92	92	92	92	92	92	92	92	2#
	3#	92	92	92	92	92	92	92	92	92	92	92	3#
	4#	92	92	92	92	92	92	92	92	92	92	92	4#
	5#	46	46	46	92	92	92	92	92	92	92	92	5#
	6#	46	46	46	46	46	46	92	92	92	92	92	6#
	7#	46	46	46	46	46	46	46	46	46	92	92	7#

Load Chart - Telescopic Boom + Boom Extension + Fixed Jib (TE2J)

性能表 - 主臂延伸节 + 副臂



Unit: t

	56.7m+35.1m			61.4m+35.1m			66.1m+35.1m			70.6m+35.1m				
	0°	20°	40°	0°	20°	40°	0°	20°	40°	0°	20°	40°		
20	3.2												20	
22	3.1			2.9			2.5						22	
24	3.1			2.8			2.5			2			24	
26	3.1	3		2.8			2.5			2			26	
28	3	2.9		2.7	2.6		2.5	2.3		2			28	
30	2.9	2.8	2.8	2.7	2.6		2.5	2.3		2	1.9		30	
32	2.9	2.7	2.7	2.6	2.5	2.5	2.5	2.2		2	1.9		32	
34	2.8	2.6	2.7	2.6	2.4	2.4	2.4	2.2	2.2	2	1.9		34	
36	2.7	2.6	2.6	2.6	2.4	2.4	2.4	2.2	2.2	2	1.9	1.8	36	
38	2.6	2.5	2.6	2.6	2.3	2.3	2.4	2.2	2.2	1.9	1.8	1.8	38	
40	2.6	2.4	2.5	2.5	2.2	2.3	2.4	2.2	2.1	1.9	1.8	1.8	40	
42	2.6	2.3	2.4	2.5	2.2	2.2	2.3	2.1	2.1	1.9	1.8	1.8	42	
44	2.5	2.2	2.3	2.4	2.2	2.2	2.3	2	2	1.9	1.8	1.8	44	
46	2.4	2.2	2.2	2.4	2.1	2.2	2.3	2	2	1.9	1.8	1.8	46	
48	2.4	2.1	2.2	2.3	2.1	2.1	2.2	2	2	1.8	1.7	1.7	48	
50	2.3	2	2.2	2.2	2	2	2.1	2	1.9	1.8	1.7	1.7	50	
52	2.2	2	2.1	2.2	2	2	2.1	1.9	1.9	1.8	1.6	1.6	52	
54	2.1	2	2	2.1	1.9	1.9	2.1	1.9	1.8	1.7	1.6	1.6	54	
56	2	1.9	1.9	2	1.9	1.9	2	1.8	1.8	1.6	1.6	1.6	56	
58	2	1.8	1.8	2	1.8	1.8	2	1.8	1.8	1.5	1.5	1.5	58	
60	2	1.8	1.8	2	1.8	1.8	2	1.8	1.8	1.5	1.4	1.5	60	
62	2	1.8	1.8	1.9	1.8	1.8	1.9	1.8	1.8	1.4	1.4	1.4	62	
64	1.9	1.7	1.7	1.8	1.7	1.7	1.8	1.7	1.7	1.4	1.4	1.4	64	
66	1.9	1.7	1.7	1.8	1.6	1.7	1.6	1.5	1.7	1.3	1.3	1.4	66	
68	1.6	1.6	1.7	1.7	1.5	1.6	1.6	1.5	1.6		1.2	1.2	68	
70	1.4	1.6		1.5	1.5	1.5	1.5	1.4	1.4		1.1	1.1	70	
	1	1	1	1	1	1	1	1	1	1	1	1		
	2#	92	92	92	92	92	92	92	92	92	92	92	2#	
	3#	92	92	92	92	92	92	92	92	92	92	92	3#	
	4#	92	92	92	92	92	92	92	92	92	92	92	4#	
	5#	46	46	46	92	92	92	92	92	92	92	92	92	5#
	6#	46	46	46	46	46	46	92	92	92	92	92	92	6#
	7#	46	46	46	46	46	46	46	46	46	92	92	92	7#

Icon Description

图标说明



Max. lifting capacity
最大起重量



Max. boom length
最大主臂长



Max. lifting radius
最大吊载幅度



Max. lifting height
最大吊载高度



Driver's cab
驾驶室



Carrier frame
车架



Engine
发动机



Transmission
变速箱



Transfer case
分动箱



Axle
车桥



Outrigger
支腿



Slewing platform
转台



Crane control
操纵方式



Hoist
起升机构



Suspension system
悬挂



Steering
转向



Tires
轮胎



Wheel formula
轮胎模式



Brake
制动



Electrical system
电气系统



Hydraulic system
液压系统



Slewing mechanism
回转机构



Safety equipment
安全装置



Load moment indicator
力矩限制器



Counterweight
配重



Boom & telescoping system
主臂



Auxiliary boom nose
臂尖滑轮



Boom extension
主臂延伸臂



Auxiliary jib
鹅头臂



CW rearward positioned
配重后移



Rear storage box
尾部储物箱



SANY GROUP CRANE BU

SANY Mobile Crane and Tower Crane Industrial Park

No.168 Jinzhou Avenue, Jinzhou Development Zone, Changsha City, Hunan Province, P.R. China Zip 410600

SANY Crawler Crane Industrial Park

No. 2188 Daishan Road, Wuxing District, Huzhou City, Zhejiang Province, P. R. China Zip 313028

Consulting sanycrane@sanygroup.com (Crane BU) / crd@sany.com.cn (IHQ)

After-sales Service 0086-400 609 8318 (Overseas)

Reminder:

Any change in the technical parameters and configuration due to product modification or upgrade may occur without prior notice.

The machine in the picture may include additional equipment. This brochure is for reference only, and goods in kind shall prevail.

Copyright at SANY. No part of this brochure may be copied or used for any purpose without written approval from SANY.

© Edited in February 2025

三一集团起重事业部

三一轮式、塔式起重机产业园：中国湖南长沙金洲开发区金洲大道168号 邮编：410600

三一履带起重机产业园：中国浙江湖州市吴兴区黛山路2188号 邮编：313028

咨询：sanycrane@sanygroup.com(起重事业部) / crd@sany.com.cn(国际总部)

售后服务：0086-400 609 8318(海外)

温馨提示：

由于技术不断更新，技术参数及配置如有更改，恕不另行通知。图中机器可能包括附加设备，本画册仅供参考，以实物为准。

版权为三一所有，未经三一书面许可，本画册任何内容不得被复制用于任何目的。

© 2025年2月版

🌐 SANY GROUP: www.sanygroup.com | SANY USED CRANE: sanyusedcranes.en.alibaba.com

SANY CRANE |  YouTube @[sanycrane4878](https://www.youtube.com/@sanycrane4878) |  Sany-crane |  SANYCraneGlobal

